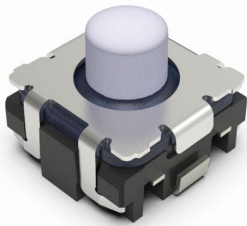


5.3×5.4mm (Surface Mount)

TS-1155

Compact mid-stroke type with reliable operation feel, including small-click and long-life variants.

 Automotive



- Series type: Sharp feeling type
- Absolute Maximum Ratings: 50mA 16V DC
- Rating (min.): 10μA 1V DC

Applications: Automotive: Navigation/audio systems, HVAC, Overhead consoles, Steering, Shifter

■ Product List

Products No.	Operating direction	Operating force (N)	Click type	Travel (mm)	Operating life (cycles)	Initial contact resistance	Dimensions (W×D×H) (mm)	Water-proof	Dust-proof	Automotive	Drawing No.
TS-1155-250	Top push	2.5	Standard	0.7	200,000	100mΩ max.	5.3×5.4×4.25	—	—	●	1
TS-1155-300	Top push	3.0	Standard	0.7	200,000	100mΩ max.	5.3×5.4×4.25	—	—	●	
TS-1155-500	Top push	5.0	Standard	0.7	200,000	100mΩ max.	5.3×5.4×4.25	—	—	●	

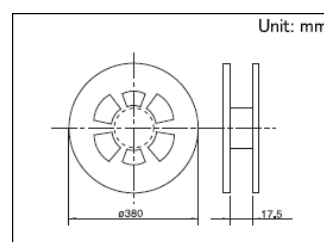
 Note

1. This catalog shows only outline specifications. When using the products, please obtain formal specifications for supply.
2. Please place purchase orders for taping products per minimum order unit (1 reel or a case).

■ Packing Specifications

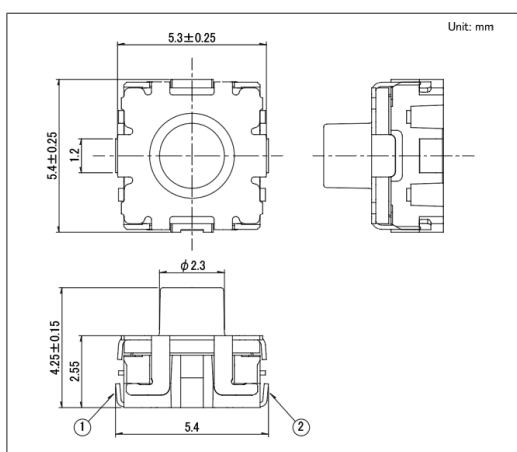
Taping

Number of packages (pcs.)			Tape width (mm)	Export package measurements (mm)
1 reel	1 case / Japan	1 case / export packing		
2,200	17,600	17,600	16	395 x 395 x 205

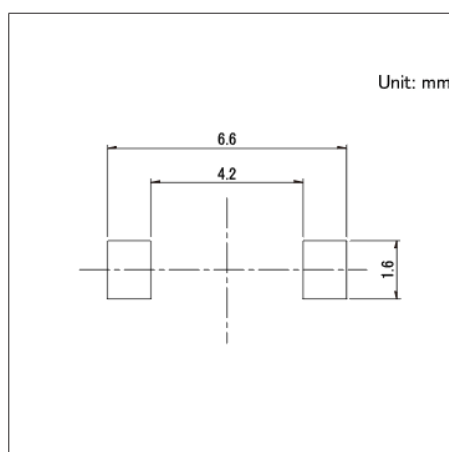


Drawing No.1

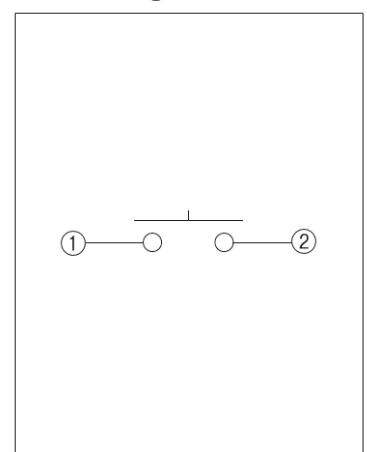
■ Dimensions



■ Land Dimensions



■ Circuit Diagram



Viewed from switch mounting face